

Tahunanui School



"I can - I will"



TAHUNANUI SCHOOL NEWS

22 September 2020

PRINCIPAL'S MESSAGE

Wow what a term! Thank you all so much for your support and patience as we have navigated through another term of covid interruptions, construction projects, chicken pox as well as the usual day to day happening in the life of the school.

Unfortunately for us, the end of this term also marks the end of our time with much loved staff members, Helen Williams and Tania Trewavas. Helen has only been in the office manager role for about 4 years after having “graduated” from her teacher aide work but most of you won’t remember life without her in the office. She really has provided that lovely warm first contact to our school and we will all miss her immensely. Tania has also been our teacher aide/librarian for 12 or so years and has transformed the library into an amazing space full of wonderful books and fun activities that our children can’t wait to visit each day. Thank you Helen and Tania. You really have shown how individuals can make a difference to so many lives and our community is extremely grateful for the genuine love and caring you have put into your work. Enjoy your next adventures and do come back and visit us when you can.



CONGRATULATIONS

Well done to our four hockey teams - you are all stars!



Some beautiful artwork was given to Helen for the medical room. Tommy and Cohen made a fabulous underwater scene to help cheer up people in the sick bay. Thanks guys, it is amazing!!

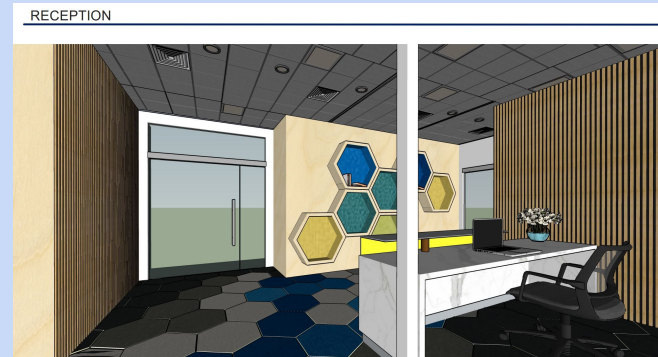
Building, Building, Building.....



The Chamberlain Block is nearing completion and our Year 3 and 4 students have moved back “home”. These holidays the building will be painted in our Tahunanui School colours.

Thank you to the Ministry of Education special infrastructure project (SIP) fund, our tennis court will become safer and more user friendly over the holidays with a resurfacing of Tiger Turf. No more tripping hazards and cold morning falls on its hard and very old surface!

We are also upgrading our office area. Here is a snippet of the innovative design we are looking forward to - less clutter and much more child, parent and staff friendly.



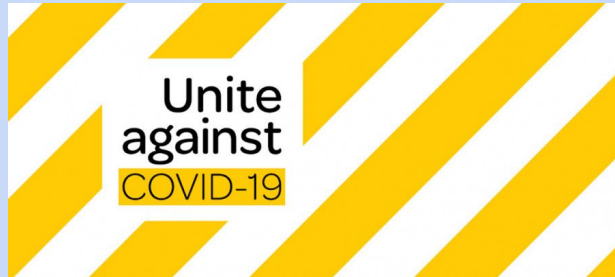
COVID-19

While we are now in level 1, we continue to practice strong hygiene practises, encouraging children and staff to regularly wash hands and use hand sanitiser, cough or sneeze into their elbow.

All adults entering the school must either scan the Covid tracer QR code or sign in at the office, this ensures that contact tracing requirements are met. Links on how to download the Covid Tracer app are available here.

<https://covid19.govt.nz/health-and-wellbeing/protect-yourself-and-others/keep-track-of-where-youve-been/>

If your child is sick, please keep them home and advise us of their absence via the usual channels.



FOOTBALL



@SCHOOL APP



The screenshot shows the login interface of the '@school Parent App'. At the top is an orange header with the text '@school Parent App'. Below this is the '@school' logo, which features the word '@school' in orange with a blue cloud-like shape behind it. There are two input fields: 'User ID' with a red person icon and a red eye icon, and 'Password' with a black padlock icon and a grey eye icon. A red error message 'User ID is required' is visible below the User ID field. A blue 'LOGIN' button is located at the bottom right of the form.

We use the @school app to communicate with parents and to share all of your children's learning data.

The app directly links to our student management system. On it you can see the information we hold about your child, access daily notices, newsletters, advise us of an absence and see their learning steps.

If you do not have a login, please email secretary@tahunanui.school.nz and ask Kara to send you your login details.

All parents/caregivers have their own unique login.

NOTICES

We will be holding Mid Term Elections for two positions on our Board of Trustees. Nominations are invited for the election of two parent representatives to the Board of Trustees. There is a Kōrari workshop that is scheduled to be held in Nelson on Tuesday 22 September. The workshop is an opportunity for people considering being nominated as a trustee to learn more.

You can register at this address

<https://www.eventbrite.co.nz/e/nzsta-korari-community-member-guide-to-the-role-of-the-board-nelson-tickets-118247887615>



A SAIL card for everyone who remembers their sunhat on the first day next term





Our school will be used as a voting place on Saturday 10th October from 9am to 4pm and again on election day Saturday 17th October between 9am and 7pm. There will also be advanced voting venues open throughout Nelson leading up to the election.

If you are not enrolled to vote, you can register here:

<https://vote.nz/>

There are lots of jobs that need to be done during an election, if you would like to be involved and work at the 2020 election, visit their website here:

<https://elections.nz/jobs/work-at-the-2020-general-election/>

Chickenpox is still about, this usually starts with children feeling generally unwell, tired, runny nose and a fever. The rash appears a couple of days later, children are infectious from a couple of days before the rash appears until the last spot has scabbed over and dried. Children must be kept home until this time.

Immunisation against chickenpox is available from your doctor.

<https://www.kidshealth.org.nz/chickenpox>



TERM 4 SPORTS

We have several sports available for term 4.

Hockey for all year levels on Thursday afternoons from 22nd October price depends on year level from \$35 - \$45

Tennis for years 2 - 6 is on Tuesday afternoons from 20th October and is \$18

Touch Rugby for all year levels is on Friday afternoons from 30th October and costs \$15

Volleyball for years 3 - 6 on Wednesday afternoons from 21st October and costs \$35

Sign up using this link

https://docs.google.com/forms/d/1oC9XcEzvGC_9PNN5JTlbrf4DiZs0siaEqIsz1LF3GO4/edit



SAILORS



Lucas demonstrates what it means to be a SAILor at Tahunanui School every day. He is helpful and respectful to those around him. Lucas aims high in everything he attempts in class. He manages himself well in and out of the classroom. Lucas, you have had to wait nearly 2 years to get the Muffy award but it is very well deserved. **ka mutu koe!**

Our SAILor Wall is looking very full. Now that we have Red Dog Tag winners, we are looking for the next step in our SAIL awards. Will it be a badge, a t-shirt or even a captains hat? What are your ideas?



TAHUNANUI COMMUNITY HUB



Community Parents Drop in Cafe



COMMUNITY PARENTS DROP-IN CAFE

Thursday mornings: 9.00am – 10.30am
Tahunanui Community Hub Hall
55 Muritai St, Tahunanui, Nelson
- Next to the Kindergarten

**All Welcome - Mums, Dads,
Caregivers, Grandparents**
Tea/Coffee and Biscuits Provided



**FREE Counselling Service has started with our NMIT 2nd Year Counselling Student.
By Appointment**

Are you: or somebody you know -

Stressed? Overwhelmed? Unhappy? Depressed? Anxious? Grieving? Stuck? Facing Challenges? Need
a Change? Suicidal? Self Harming? Emotional? Low Self-Esteem? Withdrawing? Health Issues?
Abused? Suffering Work Pressures?

We offer FREE -

Listening, Counselling, Relationship Support, Life Support, Whanau/Family Support, Mental Health
Support.

Appointment is necessary

Contact - PM our Facebook Page - Tahunanui Community Hub

Contact us from our website - <https://www.tahunanuicommunityhub.org.nz/contact>
or Phone 03 548 6036 (during office hours)

NOTICES



MENTAL HEALTH AWARENESS WEEK

DATE: 22nd September 2020 @ 9.30am

24th September 2020 @ 1.30pm

AT: Tahunanui Community Hub

BIRCHWOOD

October School Holidays 2020

Based at Birchwood Primary School, 15 Durham Street

8:00am - 3:00pm - \$43.00
8:30am - 3:00pm - \$38.00
*Trip fee's extra as advertised

8:00am - 6:00pm - \$50.00
8:30am - 6:00pm - \$45.00
*Terms & Conditions apply

WHAT'S ON?

Monday 28th	Tuesday 29th	Wednesday 30th	Thursday 1st	Friday 2nd
Angry Birds Yellow angry bird & red angry bird are joining us today	Willow Bank Heritage Park Let's go back in time \$10 Trip fee applies	Wheels Day It's wheels today at MASH! Bring your own wheels.	Richmond Aquatics Don't forget your tags and swimmer \$10 trip fee	Roald Dahl Day Let's jump into the world of Roald Dahl today
Monday 5th	Tuesday 6th	Wednesday 7th	Thursday 8th	Friday 9th
Magical Monday Today is all about magical creatures + woods and waterfalls	Tahunanui Slide We're off to the Tahunanui Mega Slide \$10 Trip fee	Sport Spectacular Run, bounce, kick, today is all about sport	Nelson Gymnastics Let's flip and tumble at Nelson Gymnastics today \$12 trip fee	FREAKY FRIDAY It's all fun and spooky today. Don't forget a place for lunch.

MY AFTER SCHOOL HEADQUARTERS

Book online now to secure your spot!

MASHKIDS.CO.NZ

For more information go to our website or email us at info@mashkids.co.nz

PRETTYSMART

Pre-loved clothing

SALE

A great opportunity to buy and sell quality adults, children's and babies pre-loved clothing, shoes, toys and baby gear at bargain prices.

Saturday 17 October
9:00am - 2:00pm
Hope Recreation Hall

\$2 Entry per family
CASH Sales only NO EFTPOS


For Sellers' Bookings and Enquiries email:
prettysmartsale@gmail.com

Txt 027 3077 410 or 021 0246 5396

Find and like us on Facebook




ORAL HEALTH



HE NIHO PĒPI
HE ITI KURA
PARAIHETIA RUA WĀ, IĀ RĀ

Baby Teeth Matter-Brush them twice a day

niho – teeth
Paraiehe ā niho – brush your teeth
Menemene – smile
Paraihe i te ata – brush in the morning
Paraihe i te pō – brush in the evening
He wai te inu – choose water to drink

 **Nelson Marlborough Health**

NELSON MARLBOROUGH
COMMUNITY ORAL HEALTH SERVICE
Nelson: (03) 539 5324 Stoke: (03) 539 5321
Richmond: (03) 539 5320
Motueka and Tasman Mobile Unit: 0800 833846
Blenheim and Marlborough Mobile 0800 833849

Healthy Smiles

Brush with fluoride toothpaste for 2 minutes twice a day

UNDER 6 YEARS: USE A SMEAR OF TOOTHPASTE
OVER 6 YEARS: USE A PEA-SIZED AMOUNT

Spit but don't rinse



 **Nelson Marlborough Health**

NELSON MARLBOROUGH
COMMUNITY ORAL HEALTH SERVICE
Nelson: (03) 539 5324 Stoke: (03) 539 5321
Richmond: (03) 539 5320
Motueka and Tasman Mobile Unit: 0800 833846
Blenheim and Marlborough Mobile 0800 833849



Spring into Gymnastics Nelson for some holiday Fun!



Preschool Casual (Everyday)
9:30am to 10:30am

Family Fun (Everyday)
10:30am to 11:30am

Friday Tumbling Workshops
2nd and 9th October
11:45am to 12:45pm

Bookings essential for Friday
workshops. Call or Email us

Monday to Friday
28th September to 9th October

Week 1 (28th Sept to 2nd October)
Week 2 (5th to 9th October)

**\$10 PER
GYMNAST**



For more information:
Gymnastics Nelson | 03 548 2513
info@gymnast.co.nz • www.gymnast.co.nz
(behind Nelson Intermediate School)

Start Here,
Excel Anywhere



Art Classes at The Suter

Term 4 2020

After School Art Classes:

The Suter runs after school art classes for school age students from 6 years up. Students have fun learning to make their own art works using our exhibitions as a springboard. They are guided in using a range of art materials and techniques for self-expression.

Art For Adults

- 10 week classes cater for beginners to those who might be more experienced, but perhaps want to try something new: Enjoy an encouraging atmosphere where you can try new techniques, media or subject matter.
- NEW this term: A 6 week clay modelling workshop

To book, or for more information, email us on
info@thesuter.co.nz, or phone 03 548 4699.

THE SUTER ART GALLERY
TE ARATOI O WHAKATU



Nelson Rhythmic Gymnastics Club

Come along and try this Olympic Sport

Lots of fun, lots of music, lots of movement. Sessions include working with hand apparatus including ribbons, hoops, ropes and balls!

Small class sizes - Maximum 10 children per class

From Ages 4 + for boys and girls - class trial \$10.00

Classes Held at the Nelson Badminton Hall 20B Gladstone Road Richmond.

OCTOBER HOLIDAY PROGRAMME

6th & 8th October 1:30-3:30pm, 10th October 10am-12pm

For More Information email: info.nelsonrgclub@gmail.com

Check out Facebook Page Nelson Rhythmic Gymnastics Club

love tennis

**All welcome
come play**
it's free!



Sat 10 & Sun 11 Oct 1-4pm



The NZ Marine Studies Centre have a new series of short videos introducing 'SOAK'.

Soak is the loveable but unreliable, pied cormorant/shag.

You can meet Soak here [NZ Marine Studies Centre](#).



ABEL TASMAN
SEA SHUTTLE
Enjoy the Best

Kids Travel Free!*

School Holiday Special
0800 732 748

Athletics

RICHMOND

2020 / 2021 SEASON

INTRO / FUN NIGHT

13th OCTOBER 2020

5:15pm

@

Saxton's Athletics Track

Saxton Field

Junior athletics is great fun. It teaches skills that improve performance in other sports – athletes learn to run faster, jump higher and throw further. Come along and try a new summer sport. Registrations opening soon. Ages 5-15 years. We have a fantastic season coming up with Tasman hosting the South Island Colgate Games in January 2021.



WE'VE GOT THIS — ADVENTURE CHALLENGE

Over the school holidays, we want Nelson Tasman young'uns to do some gaming. Not your standard, lock-yourself-in-the room-for-eight-hours-and-stare-at-the-screen style gaming, however. This is gaming in real life: The Nelson Tasman Adventure Challenge.

Using the Goosechase scavenger hunt phone app, we have created 50 different regional challenges - like exploring the Abel Tasman, stopping in at a local attraction, getting active, writing a message in the sand, following the street art trail, or creating a picnic or meal using local products.

Each challenge you complete earns you entries into the draw for the main \$3,000 prize. There are also over \$5,000 worth of additional spot prizes up for grabs for those who complete individual challenges.

You don't have to complete all of the challenges to be in the running, but the more challenges you tick off, the more points you'll earn (and the more fun you'll have!). So whether you want to do it as part of a school team, as a group of friends, as a family, or maybe even by yourself, it's a great excuse to do something new and 'play' the region.

It's not just for the locals, either. If you have friends or family coming to visit during the school holidays, it's a great way for them to see how good we've got it here. And for the parents, there are also plenty of more 'mature' challenges to complete, like wine tasting, craft beer sampling and local shopping.

The Nelson Tasman Adventure Challenge will go live at 12pm Wednesday 23rd September and will run until 11pm on Sunday 11th October. All prizes will be drawn on Monday 12th October.

It's sometimes easy to forget how lucky we are to live in such an extraordinary place and this challenge is the perfect way to remind ourselves.

Just like the first phase of the We've Got This campaign, which asked locals to share their favourite things on social media, by participating in this challenge you'll also be doing your bit to support local businesses and promote the region. It's a true win-win - and, given all the prizes up for grabs, you could even call it a win-win-win.

Full details here: www.wavegotthis.nz/adventure

Some messages for Tania and Helen

